



**ChovA**  
SISTEMAS DE IMPERMEABILIZACIÓN  
Y AISLAMIENTO

# CAZOLETA SIFÓNICA

SIPHON DRAIN

TECHNICAL FILE N° 84060 - REVIEW 5/03  
THIS REVIEW CANCELS PREVIOUS

## DESCRIPTION

Roof drain, made with EPDM (ethylene-propylene-diene thermopolymer). Consists on a drain and gravel grille.

EPDM drain are:

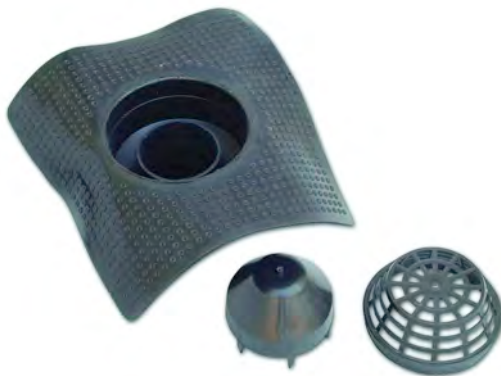
- Corrosion resistant
- Weather resistant.
- Temperature variations resistant.
- Flame resistant during application.

## TECHNICAL CHARACTERISTICS.

TRACTION TEST. (UNI 6065 Tipo I).

Tensile at 200 %.	(MPa)	3,8
Breaking resistance.	(MPa)	6,0
Elongation to break.	(%)	450
After thermal aging. (UNI-ISO 188)		
Tensile at 200 %.	(MPa)	6,7
Breaking resistance	(MPa)	8,9
Elongation to break	(%)	290
Low temperature fragility. at -30 °C	.....	DOES NOT BREAK
Aging test.	.....	CORRECT
Asphalt bitumen compatibility.	.....	CORRECT
Ozone resistance.	.....	CORRECT

## SHAPE AND DIMENSIONS.



SKIRT. ....	360 mm
SIPHON. ....	170 mm
DOWNSPOUT. ....	220 mm

Downspout bottom diameter for engaging. According drain size

Drain of	:	80 mm	→	76 mm
		100 mm	→	95 mm
		110 mm	→	96 mm

**JOINABLE TO DOWNSPOUTS OF: 80, 100 or 110 mm diameter. According to size.**

Provided information matches up with data obtained in our own laboratories and/or accredited external laboratories. This product will maintain these characteristics on average. ChovA, S. A. reserves the right to modify or cancel any parameter without previous notice. ChovA, S. A. guarantee is limited to the product quality. As for commissioning work, which do not participate, the product installation instructions must be followed carefully. Soundproofing values may differ from those shown here due to improper execution of work. This technical file will be voided by subsequent revisions and, if in doubt, request the latest revision.